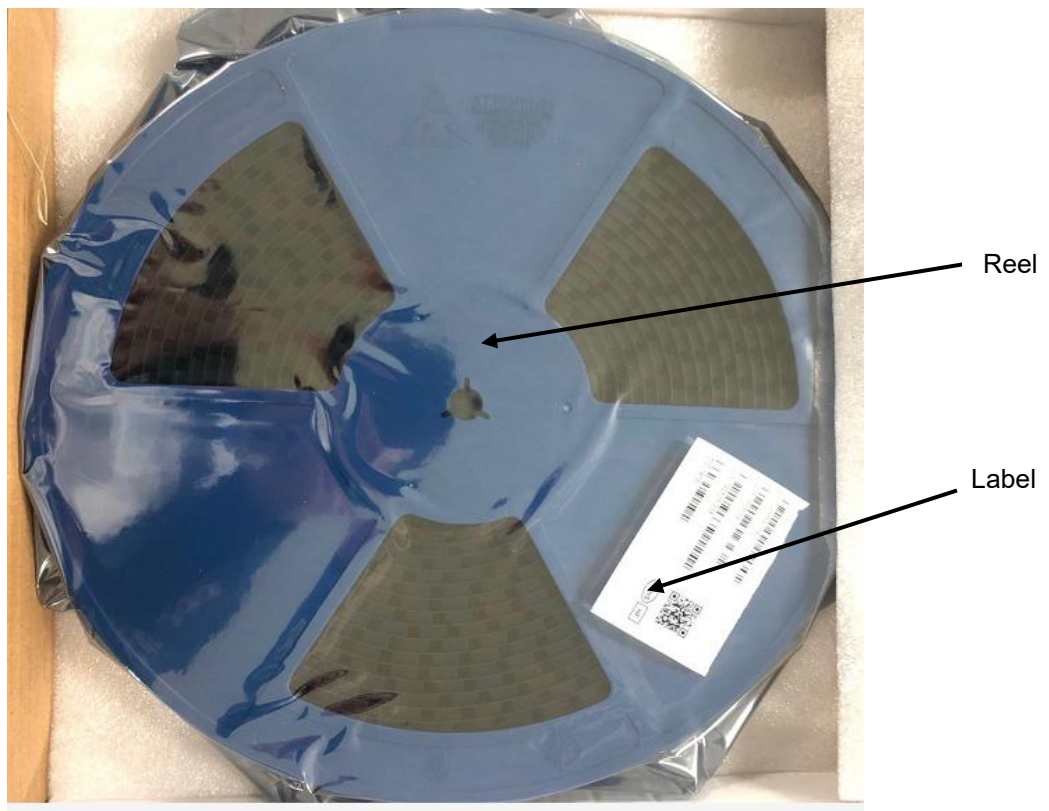


1. Finish Goods PKG photo



2. Packing method



B042, Rev. -

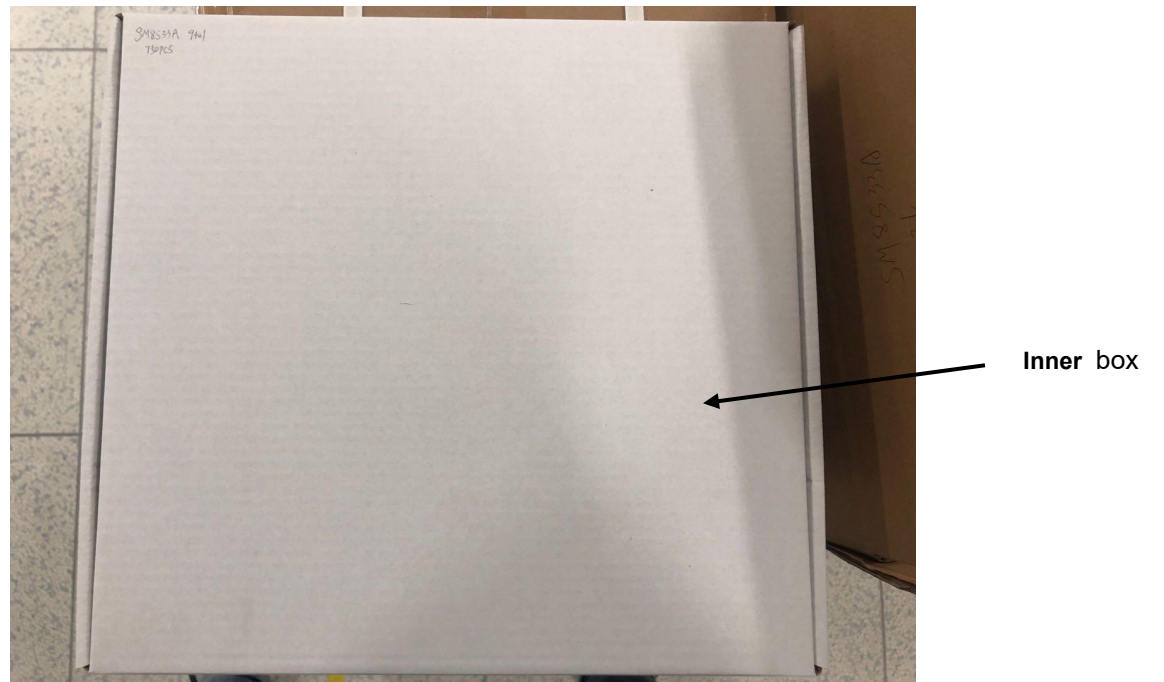


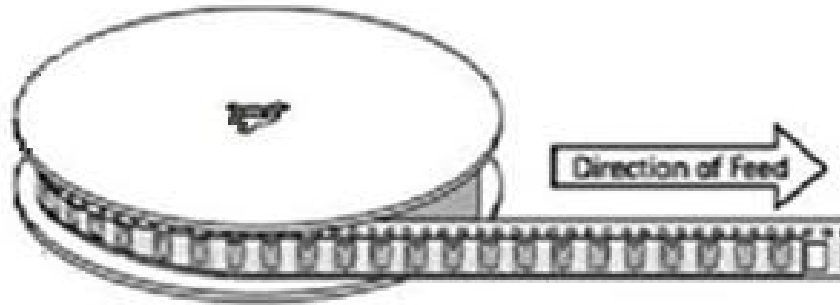
Fig.1- Reel pack for DO-218AB

Table 1. Packing information

- China - Germany - Korea - Singapore - United States •
- <http://www.smc-diodes.com> - sales@smc-diodes.com •

Package version	Reel dimensions ϕ (mm)	Pcs/reel (pcs)	Per reel weight (Kg)	Reels Inner box	Inner box weight (Kg)	Inner box per outer box	Outer box weight (Kg)
DO-218AB	Φ 330*18.4	750	2.65	1	2.9	4	12.5

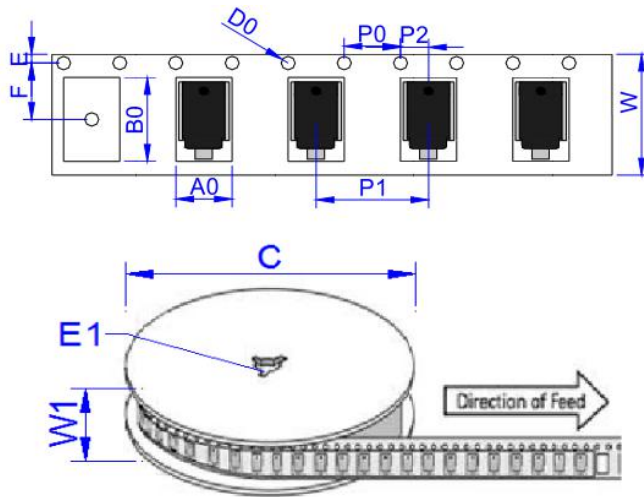
3. Product orientation



direction of feed

Fig 2. Product orientation in carrier tape

4. Carrier tape dimensions & Reel dimensions



Ref.	Dimensions	
	Millimeters	Inches
A0	10.80 ± 0.3	0.425 ± 0.012
B0	16.13 ± 0.3	0.635 ± 0.012
C	330.0 ± 0.3	13.0 ± 0.012
D0	1.55 ± 0.2	0.061 ± 0.008
D1	1.55 ± 0.2	0.061 ± 0.008
E	1.75 ± 0.2	0.069 ± 0.008
E1	13.30 ± 0.2	0.524 ± 0.008
F	11.50 ± 0.2	0.453 ± 0.008
P0	4.00 ± 0.2	0.157 ± 0.008
P1	16.00 ± 0.2	0.630 ± 0.008
P2	2.00 ± 0.2	0.079 ± 0.008
W	24.00 ± 0.2	0.945 ± 0.008
W1	25.85 ± 0.2	1.018 ± 0.008

Fig 3. Carrier tape dimensions & Reel dimensions